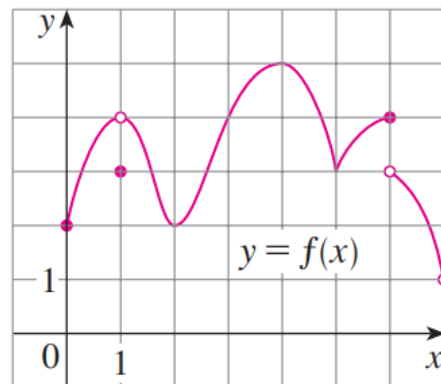


Exercise 5

Use the graph to state the absolute and local maximum and minimum values of the function.



Solution

Absolute Maximum : $(4, 5)$

Absolute Minimum : None

Local Minima : $(1, 3)$, $(2, 2)$, $(5, 3)$

Local Maxima : $(4, 5)$, $(6, 4)$

$(0, 2)$ and $(7, 1)$ are not local minima because they're at the endpoints. In addition, the function is not defined at $x = 7$.